



**Our strategy is to maintain a balanced portfolio of infrastructure investments delivering an attractive mix of income yield and capital appreciation for our shareholders.**

Our objectives are to provide shareholders with a total return of 8% to 10% per annum, to be achieved over the medium term, with a progressive annual dividend per share.

**A differentiated investment proposition**

We invest across mid-market economic infrastructure in developed markets, with a focus on the UK and Europe.

**Clear strategic priorities**

Maintaining a balanced portfolio

Disciplined approach to new investment

Maintaining an efficient balance sheet

Managing the portfolio intensively

Sustainability a key driver of performance

**Key facts**

**£1.8bn**

portfolio value

**20**

assets

**9.8p**

target dividend per share for FY21

**12.7%**

total shareholder return, annualised since IPO

**3.8%**

total return on opening NAV in the six months to 30 September 2020

**£360m**

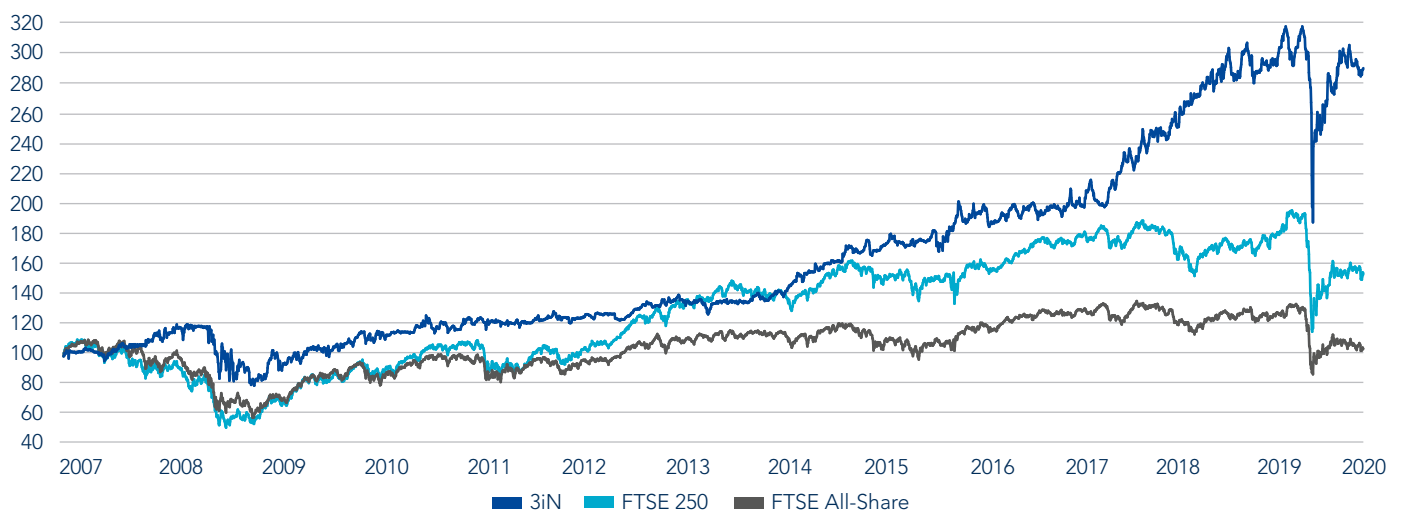
cash balances as at 30 September 2020

**Total Shareholder Return**

Name	1 Year	3 Year	5 Year	Since IPO p.a
3i Infrastructure plc	18.9%	56.6%	100.7%	403.9%
FTSE 250 Index	16.0%	-5.9%	18.4%	123.5%
FTSE All share	7.3%	-9.3%	18.6%	68.2%

As at 30 September 2020

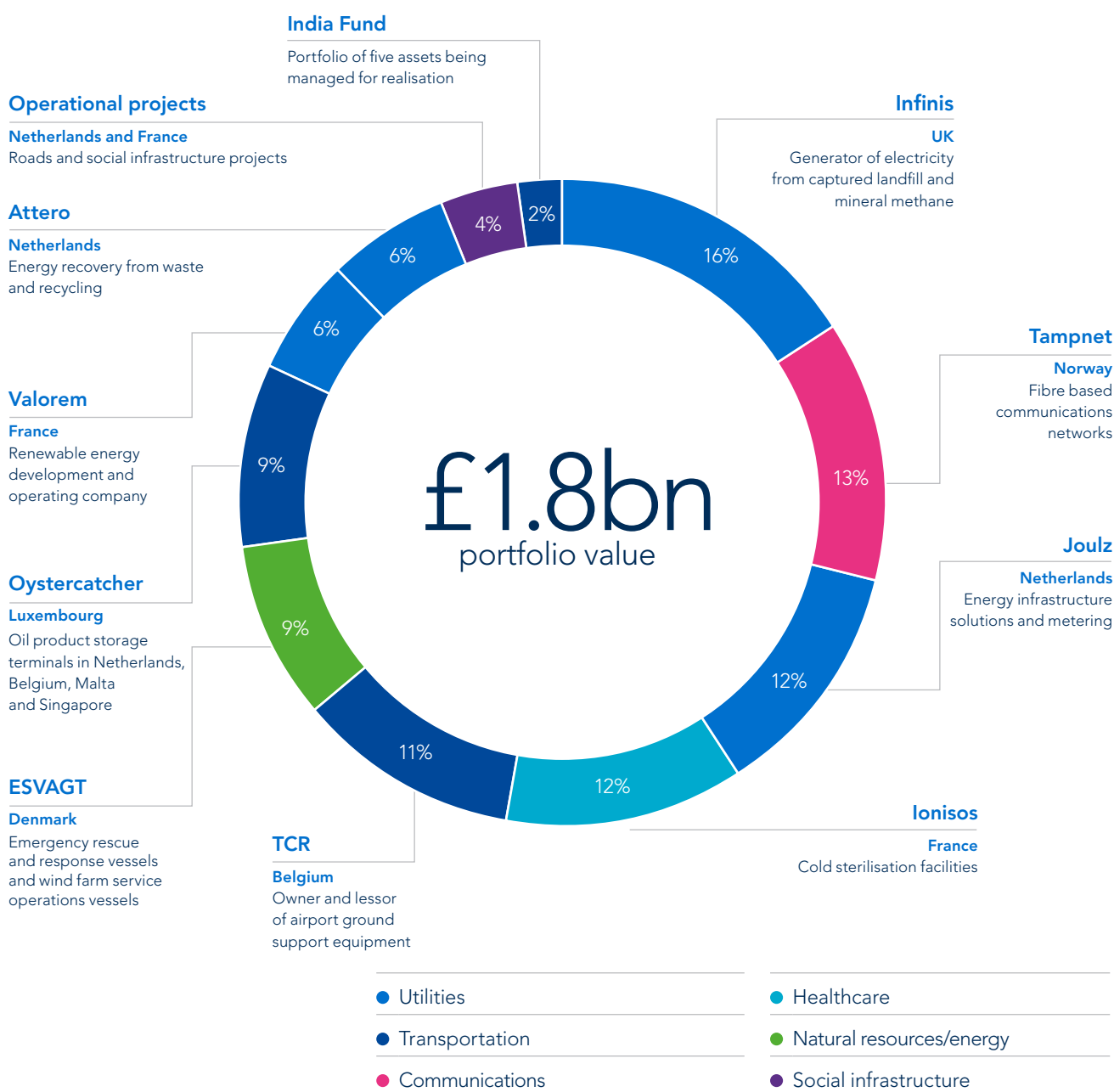
**3iN share price performance since IPO**



As at 30 September 2020

# A large and diversified portfolio

Portfolio value by investment (as at 30 September 2020)



## 3i Infrastructure plc

Registered office  
12 Castle Street  
St. Helier  
Jersey JE2 3RT  
Channel Islands  
T +44 (0)1534 847 410

## Thomas Fodor

Investor Relations Director  
T +44 (0)20 7975 3469

- Tiered management fee: 1.4% p.a. in respect of the portion of the gross investment value of the Company's portfolio up to £1.25 billion; 1.3% p.a. above £1.25 billion up to £2.25 billion; and 1.2% above £2.25 billion
- One-off transaction fee: 1.2% of the acquisition price of each new Investment
- No fee on cash or other net assets
- Performance fee equal to 20% of the Company's total return in excess of 8%, payable in three equal annual instalments, with the 2nd and 3rd instalments only payable if the performance of the Company exceeds 8% in those years or is above the 8% hurdle over the three years on an annual basis

3i Infrastructure plc is a closed-ended investment company incorporated in Jersey and tax resident in the United Kingdom, listed on the London Stock Exchange (FTSE 250) and regulated by the Jersey Financial Services Commission. 3i Investments plc, a wholly-owned subsidiary of 3i Group plc, is authorised and regulated in the UK by the Financial Conduct Authority and acts as 3i Infrastructure plc's investment manager.