



Our strategy is to maintain a balanced portfolio of infrastructure investments delivering an attractive mix of income yield and capital appreciation for our shareholders.

Our objectives are to provide shareholders with a total return of 8% to 10% per annum, to be achieved over the medium term, with a progressive annual dividend per share.

A differentiated investment proposition

We invest across mid-market economic infrastructure in developed markets, with a focus on the UK and Europe.

Strategic priorities

Maintaining a balanced portfolio

Disciplined approach to new investment

Managing the portfolio intensively

Maintaining an efficient balance sheet

Sustainability a key driver of performance

Key facts

£3.2bn

portfolio value including commitments*

18

assets

11.15p

target dividend per share for FY23

13.1%

total shareholder return, annualised since IPO

17.2%

total return on opening NAV in the year to 31 March 2022

£786m

total liquidity

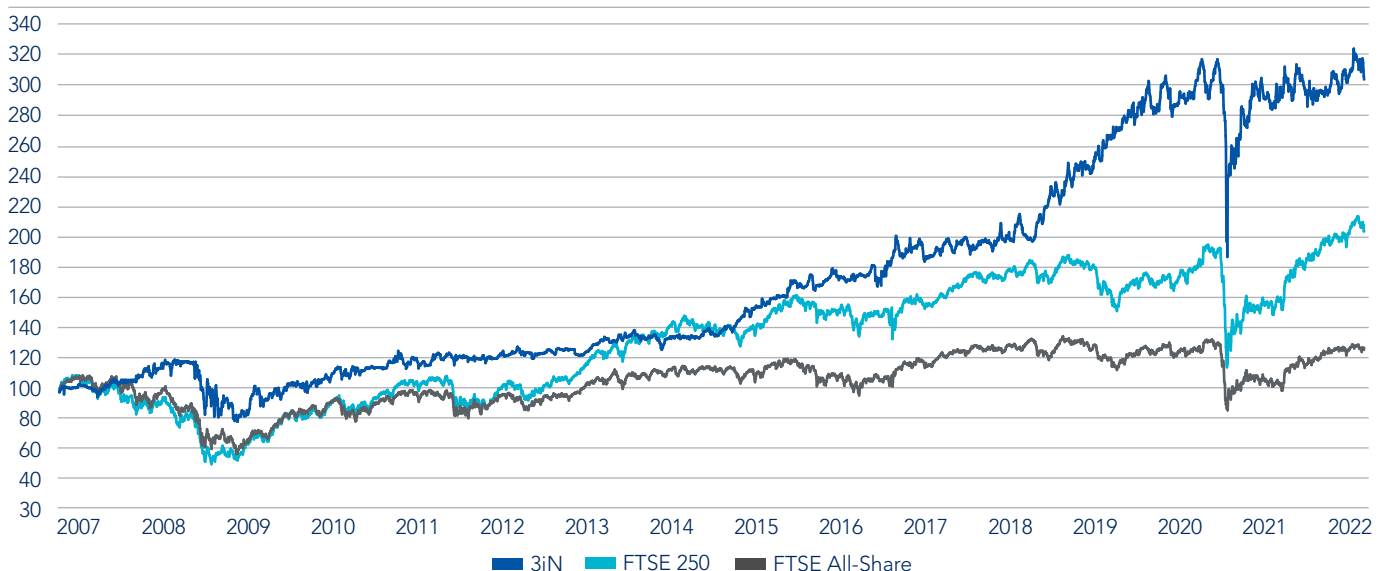
*Includes commitment to invest in Global Cloud Xchange announced on 17 November 2021

Total Shareholder Return

Name	1 Year	3 Year	5 Year	Since IPO p.a
3i Infrastructure plc	20.9%	38.8%	106.8%	13.1%
FTSE 250 Index	0.5%	18.6%	26.1%	7.1%
FTSE All share	13.0%	16.8%	25.7%	5.5%

As at 31 March 2022

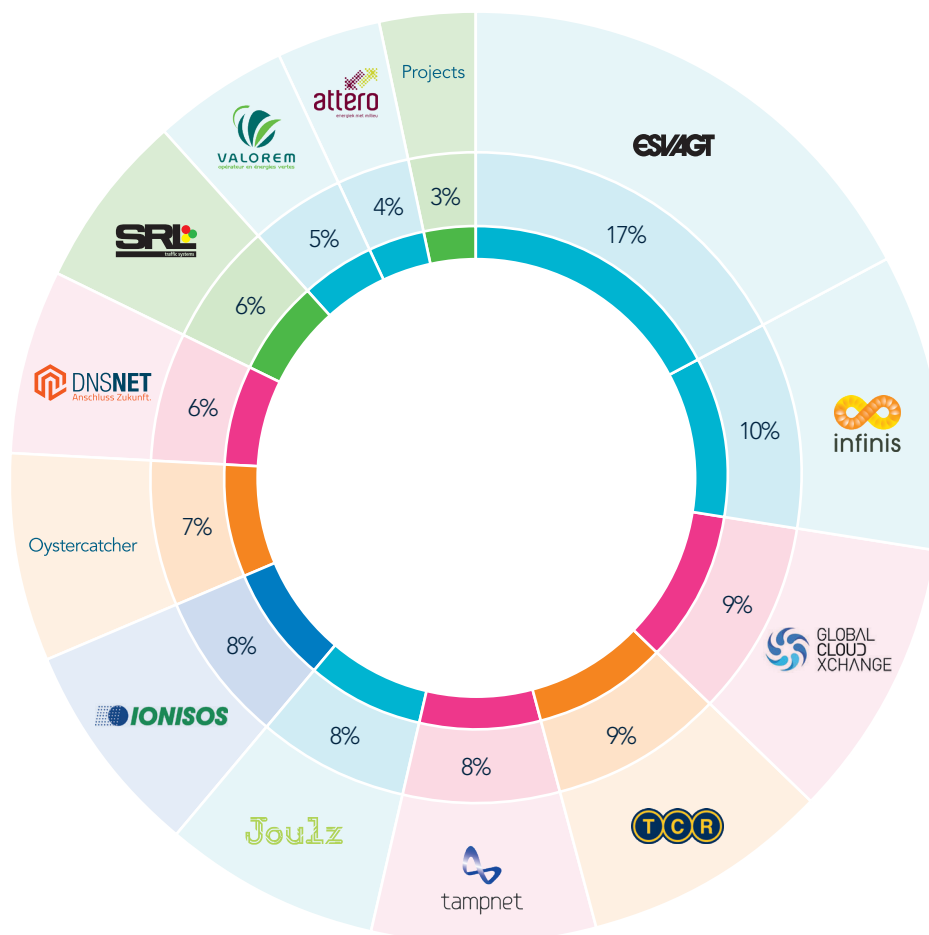
3iN share price performance since IPO



As at 31 March 2022

A well diversified investment portfolio

Portfolio value by investment (as at 31 March 2022)



Energy transition	44%	Renewing social infrastructure	9%
Digitalisation	23%	Demographic change	8%
Globalisation	16%		

3i Infrastructure plc

Registered office
12 Castle Street
St. Helier
Jersey JE2 3RT
Channel Islands
T +44 (0)1534 847 410

Thomas Fodor

Investor Relations Director
T +44 (0)20 7975 3469

- Tiered management fee: 1.4% p.a. in respect of the portion of the gross investment value of the Company's portfolio up to £1.25 billion; 1.3% p.a. above £1.25 billion up to £2.25 billion; and 1.2% above £2.25 billion
- One-off transaction fee: 1.2% of the acquisition price of each new Investment
- No fee on cash or other net assets
- Performance fee equal to 20% of the Company's total return in excess of 8%, payable in three equal annual instalments, with the 2nd and 3rd instalments only payable if the performance of the Company exceeds 8% in those years or is above the 8% hurdle over the three years on an annual basis

3i Infrastructure plc is a closed-ended investment company incorporated in Jersey and tax resident in the United Kingdom, listed on the London Stock Exchange (FTSE 250) and regulated by the Jersey Financial Services Commission. 3i Investments plc, a wholly-owned subsidiary of 3i Group plc, is authorised and regulated in the UK by the Financial Conduct Authority and acts as 3i Infrastructure plc's investment manager.